

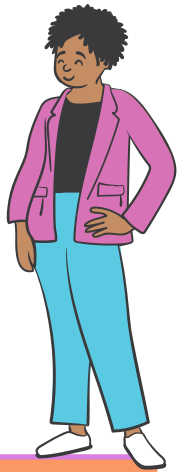


Neighborhood Vitality Index

Make NVI data work for you



Patricia is a principal at an elementary school where the students are almost all from the local neighborhood, but the school struggles to engage parents and adult guardians in school activities and teacher conferences.



Get Curious!



Identify a problem you have or something you're curious about:

Parents and guardians aren't participating in our school conferences.

Turn it into a question:

What might be preventing parents from participating?

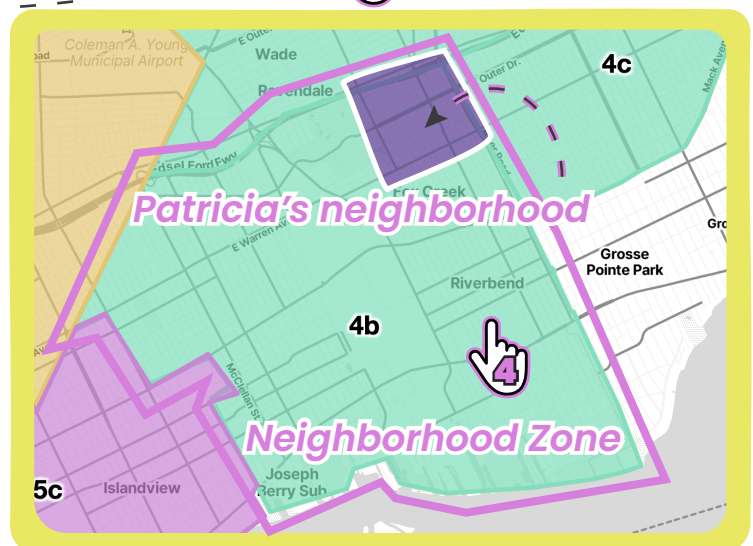
Find Data!

Patricia navigates to the website nvidetroit.org



Patricia finds a map that allows her to look at a geography that covers her neighborhood.

Click on a **Neighborhood Zone** to view its data





Not only does Patricia find the 3rd grade reading levels for her neighborhood, she's able to start learning a lot more about the residents in her neighborhood. Patricia finds data such as:

Resident Opportunity

- 72%** Owner-occupied households spend less than 30% of income on housing
- 31%** Renter-occupied households spend less than 30% of income on housing
- 44%** Above 200% of the federal poverty level
- 22%** Third grade students meet or exceed grade level standards in ELA
- 62%** Births where the mother received adequate prenatal care

62% have not had transportation prevent them from working, attending appointments, or other daily living activities

59% Have not missed appointments, work, or other daily activities due to lack of childcare

83% have at least a high school diploma or GED

50% Currently have their job in Detroit

45% Households with at least one person under age 18 participating in out-of-school programs in the last twelve months

Act On It!

Based on this information, Patricia realizes that the families in her school are probably struggling with the attending conferences and activities at the end of the school day. She decides to pilot alternative engagement strategies in the new school year, including non-traditional times and a home visit option.

When are families available to meet with teachers?



Dive Deeper

Patricia notices a deep dive section on the NVI site and requests an account. She learns that some residents in the area could benefit from increased internet and device access.

Youth Quality of Life

Want to dive deeper into data for your neighborhood?

If you work for a Detroit-based organization and would like an account to view more information, [let us know!](#)

Learn more about housing by exploring the [Housing Information Portal!](#)

Find out more about the welfare of children and families in Detroit with [State of the Detroit Child 2.0!](#)



Patricia begins to have deeper conversations with her families about their digital skills, and how the school can support parents and guardians in engaging with the education of their kids.